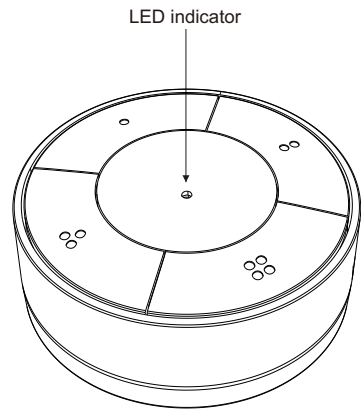


Zigbee Smart Remote



Important: Read All Instructions Prior to Installation
Function introduction

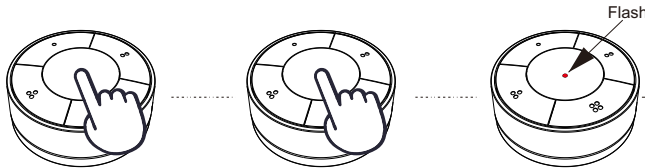


Product Data

- Smart zigbee 3.0 standard remote with 5 push keys and 1 rotary
- ALL keys and rotary function can be customized through Azoula APP
- Battery powered with low power consumption
- Magnet built-in, desktop or standard EU/US wall mounted bracket for optional
- Lights, zones, and scenes control can be customized

| | |
|---------------------------------|-----------------------|
| Protocol | ZigBee 3.0 |
| Operation Voltage | 3VDC (CR2450 battery) |
| Transmission Frequency | 2.4GHz |
| Transmission Range (free field) | 30m |
| Dimension | Φ 58x20mm |
| Waterproof Grade | IP20 |

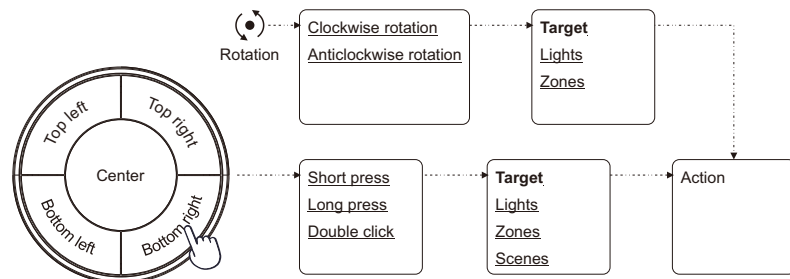
Network pairing/reset



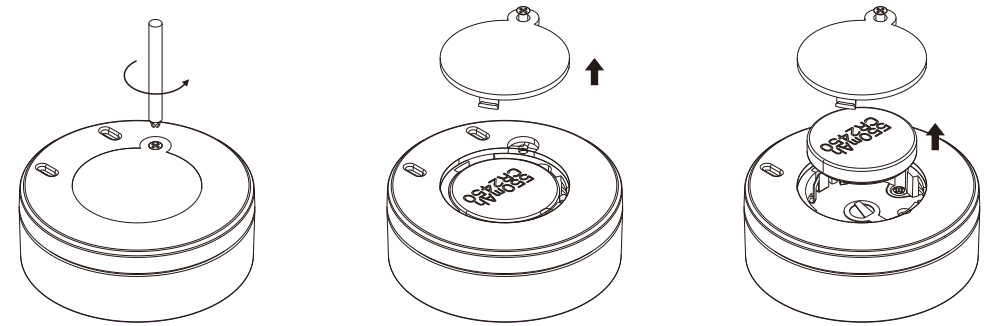
1. Quickly short press the center button 5 times
2. Immediately long press the center button for 3 seconds.
3. The red LED indicator flash. The remote into network pairing mode or reset mode.

Keys and rotary function setting

After adding the remote into Azoula, then you can choose and tap each button or rotary to customize the function



Replace Battery



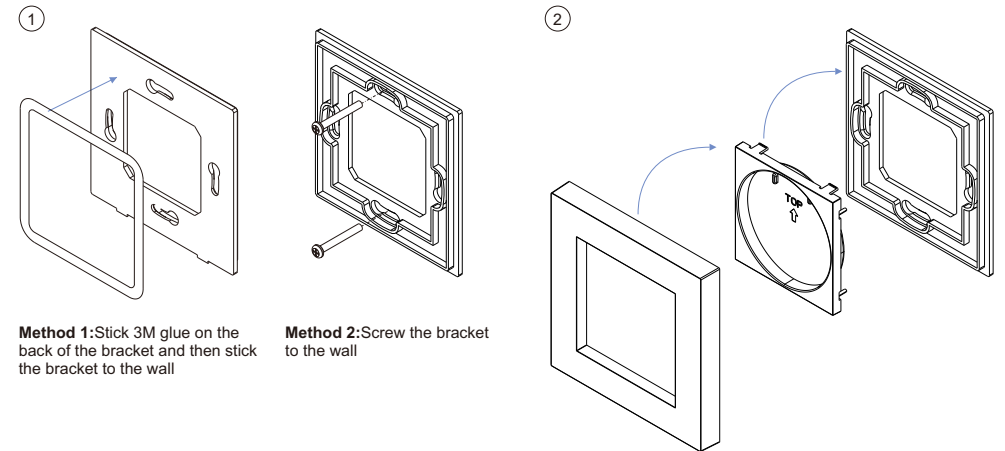
1. Use a screwdriver to open the battery cover

2. Remove the battery cover

3. Replace the battery and reinstall the battery cover

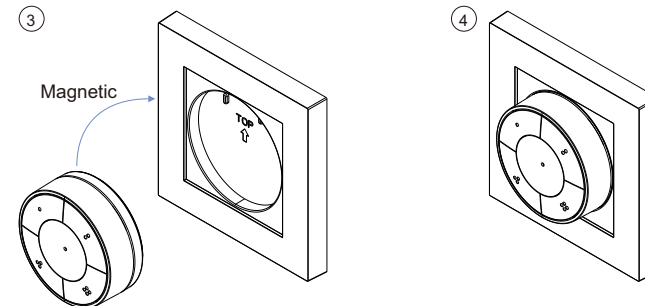
Installation bracket(Choose the appropriate mounting method based on the selected bracket)

1. EU standard size bracket

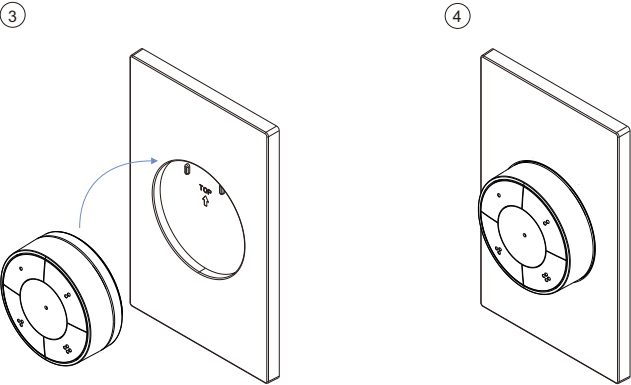
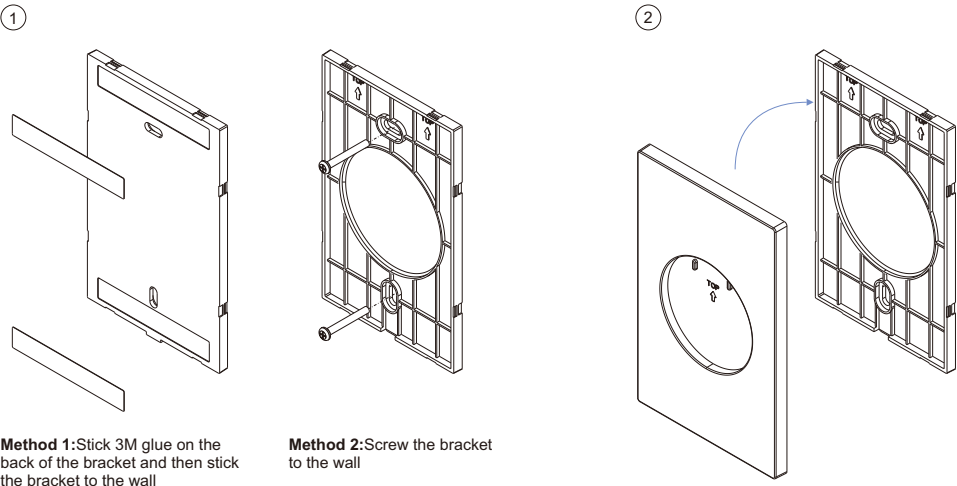


Method 1: Stick 3M glue on the back of the bracket and then stick the bracket to the wall

Method 2: Screw the bracket to the wall



2. US standard size bracket



Battery Warnings & Safty

Warnings and Statements:

This product contains a CR Coin Cell Lithium Battery and meets the requirements of the **16 CFR Part 1263**. For your safety and to ensure proper operation, please carefully read and understand the following warnings and statements.

⚠ WARNING

- **INGESTION HAZARD:** This product contains a button cell or coin battery.
- **DEATH** or serious injury can occur if ingested.
- A swallowed button cell or coin battery can cause **Internal Chemical Burns** in as little as **2 hours**.
- **KEEP** new and used batteries **OUT OF REACH of CHILDREN**
- **Seek immediate medical attention** if a battery is suspected to be swallowed or inserted inside any part of the body.

Statements:

- **INDOOR USE ONLY**
- Remove and immediately recycle or dispose of used batteries according to local regulations and keep away from children. Do NOT dispose of batteries in household trash or incinerate.
- Even used batteries may cause severe injury or death.
- Call a local poison control center for treatment information.
- Do not install any battery other than CR2450 or its equivalent.
- Ensure the CR2450 operates at the nominal battery voltage (3VDC).
- Non-rechargeable batteries are not to be recharged.
- Do not force discharge, recharge, disassemble, heat above (manufacturer's specified temperature rating) or incinerate. Doing so may result in injury due to venting, leakage or explosion resulting in chemical burns.
- Ensure the batteries are installed correctly according to polarity (+ and -).
- Do not mix old and new batteries, different brands or types of batteries, such as alkaline, carbon-zinc, or rechargeable batteries.
- Remove and immediately recycle or dispose of batteries from equipment not used for an extended period of time according to local regulations.
- Always completely secure the battery compartment. If the battery compartment does not close securely, stop using the product, remove the batteries, and keep them away from children.
- If the battery leaks, do not touch or smell it, wipe the leakage from the battery compartment, and then replace the battery with a new one.
- If a battery leaks and the material contacts your skin or clothing, flush the exposed area thoroughly with running water. In case of eye contact, flush thoroughly with copious amounts of clean running water and seek immediate medical assistance.

Battery information:

| Battery | Battery Type | Operation Voltage | Diameter |
|---------|--------------|-------------------|-------------------|
| CR2450 | Button Cell | 3VDC | 24.5mm(0.965inch) |

Disposing of used batteries:

- When disposing of used batteries, please comply with governmental regulations or environmental public institutions' rules that apply in your country/area.
- Note and follow the **STATEMENTS** in **WARNINGS AND STATEMENTS**.